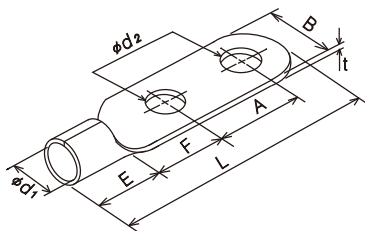
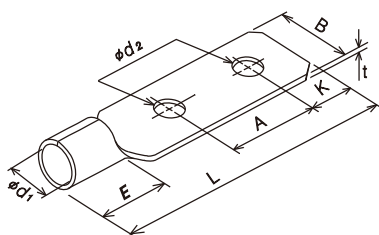


# 裸端子 丸形2つ穴(RD形)



品番 Catalog No.	規格 Standards	適合ねじ径 Stud Size	適合電線範囲 Wire Size	寸法 (mm) Dimensions								入り数 Qty/Box	適合工具 Tool No.
		$\phi$ mm	mm <sup>2</sup> (AWG#)	$\phi d_1$	$\phi d_2$	B	E	L	F	A	t	内箱	
RD150-12	JIS	12	117.2~150.05 (250~300MCM)	19.5	14.2	36.0	27.5	106.0	20.5	40.0	3.3	20	NH-12 NH-21
RD200-12	JIS		192.6~242.27 (400~450MCM)	24.0	14.2	44.0	32.0	117.0	23.0	40.0	4.0	10	NH-21
RD325-12	JIS		242.27~325 (500~600MCM)	28.0	14.2	50.5	36.5	124.0	22.2	40.0	4.5	5	

# 裸端子 角形2つ穴(D形)



品番 Catalog No.	適合ねじ径 Stud Size	適合電線範囲 Wire Size	寸法 (mm) Dimensions								入り数 Qty/Box	適合工具 Tool No.	備考
	$\phi$ mm	mm <sup>2</sup> (AWG#) ( $\phi$ mm)	$\phi d_1$	$\phi d_2$	B	E	L	A	K	t	内箱		規格該当品 旧電電
5.5-D-4	4	2.63~6.64 (12~10) (1.82~2.89)	3.4	4.4	10.0	6.5	34.2	12.0	5.0	1.0	300	T-112	5.5-D-4
5.5-D-5	5			5.4									5.5-D-5
8-D-5	5	6.64~10.52 (8) (2.88~3.65)	4.5	5.4	15.0	8.1	37.7	12.0	6.0	1.2	200	T-122 H-104N (NH-12)	8-D-5
8-D-6	6			6.6									8-D-6
14-D-5	5	10.52~16.78 (6) (3.65~4.62)	5.8	5.4	15.0	10.0	46.0	16.0	7.0	1.5	300	H-104N (NH-12)	14-D-5
14-D-6	6			6.6									14-D-6
14-DA-3	3			3.7									14-DA-3
22-D-5	5	16.78~26.66 (2) (4.62~5.81)	7.7	5.4	15.0	11.5	48.5	16.0	7.0	1.8	200	H-104N (NH-12)	22-D-5
22-D-6	6			6.6									22-D-6
38-D-5	5	26.66~42.42 (2) (—)	9.4	5.4	18.0	13.2	51.2	16.0	7.0	1.9	100	H-104N (NH-12, NH-21)	38-D-5
38-D-6	6			6.6									38-D-6
60-D-12	12	42.42~60.57 (1/0) (—)	11.4	14.2	22.0	18.5	89.0	40.0	15.0	2.0	50	H-104N NH-12 (NH-21)	60-D-12
100-D-10	10	96.3~117.2 (4/0) (—)	16.4	11.2	28.5	20.0	87.0	32.0	15.0	2.8	30	NH-12 (NH-21)	100-D-10
100-D-12	12			14.2			95.0	40.0					100-D-12
150-D-12	12	117.2~152.05 (250~300MCM) (—)	19.5	14.2	36.0	27.5	106.5	40.0	18.0	3.2	20	NH-12、21	150-D-12
200-D-12	12	192.6~242.27 (400MCM) (—)	24.0	14.2	44.0	32.0	117.0	40.0	18.0	4.0	10	NH-21	200-D-12
325-D-12	12	242.27~325 (500~600MCM) (—)	28.0	14.2	50.5	36.5	124.0	40.0	18.0	4.5	5	NH-21	325-D-12

※( )表示の適合工具は、オプションサイズ使用時です。